

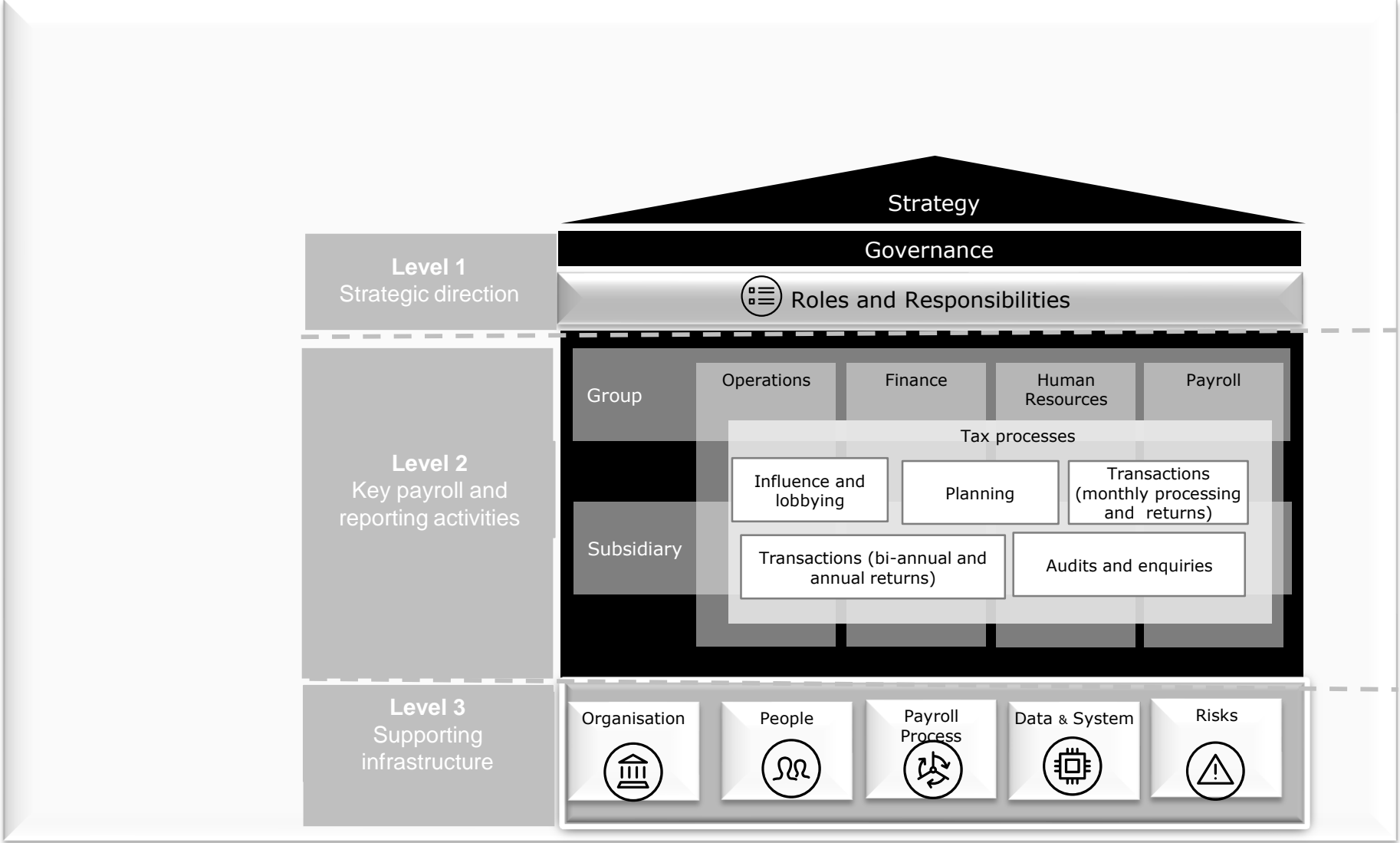


Africa Tax & Legal

DEVELEOP YOUR INTERNAL CONTROLS AND FRAMEWORK

September 2018

Payroll controls and framework overview



Assessing the Payroll Operating Model



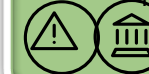
Evaluating Core Payroll Processes



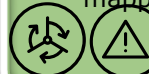
Understand Roles and Responsibilities



Payroll Risk Control Framework



Payroll Risk Register and mapping payroll risk process



Payroll Procedure Manuals / Handbook



“Deloitte” is the brand under which tens of thousands of dedicated professionals in independent firms throughout the world collaborate to provide audit, consulting, financial advisory, risk management, and tax services to selected clients. These firms are members of Deloitte Touche Tohmatsu Limited (DTTL), a UK private company limited by guarantee. Each member firm provides services in a particular geographic area and is subject to the laws and professional regulations of the particular country or countries in which it operates. DTTL does not itself provide services to clients. DTTL and each DTTL member firm are separate and distinct legal entities, which cannot obligate each other. DTTL and each DTTL member firm are liable only for their own acts or omissions and not those of each other. Each DTTL member firm is structured differently in accordance with national laws, regulations, customary practice, and other factors, and may secure the provision of professional services in its territory through subsidiaries, affiliates, and/or other entities.