

# Unemployment Insurance

2018.09.12



labour

Department:  
Labour  
REPUBLIC OF SOUTH AFRICA



# Points to discuss

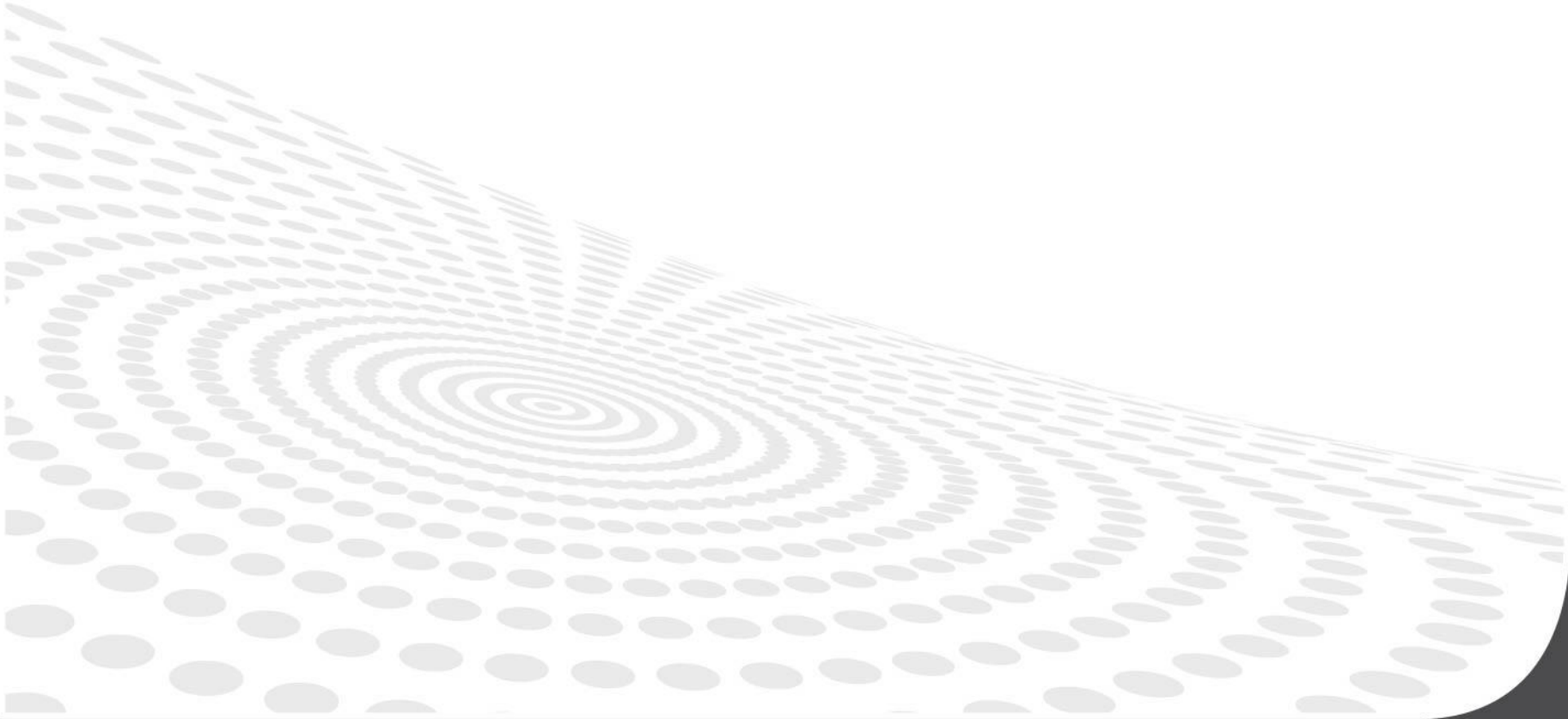
- U-filing modernisation
  - UI Act Amendments
  - UI Contributions Act Amendments
- 

# U-filing Modernisation

- Excited to announce a Better, Faster and Easier uFiling to be delivered shortly
- Aims:- Two Phases:
- Phase 1
  - Brand new HTML5 interface, scalable for any screen
  - Register employer online
  - Communication
  - Bulk upload and enhanced declaration process

# U-filing Modernisation (cont...)

- Password reset (Self-Help)
- Enhanced Administration console



# U-filing Modernisation

- Phase 2
  - Enhanced electronic declarations
  - Declaration reconciliation.
  - Audit management
  - 3<sup>rd</sup> party payments

# UI Act Amendments

- Credit calculation will be at a rate 4:1, up to 365 days
- From 239 to 365 is paid on a flat rate = 20%
- Maternity will be paid on a flat rate = 66%
- Partial unemployment
- Waiting period is extended from 6 to 12 month

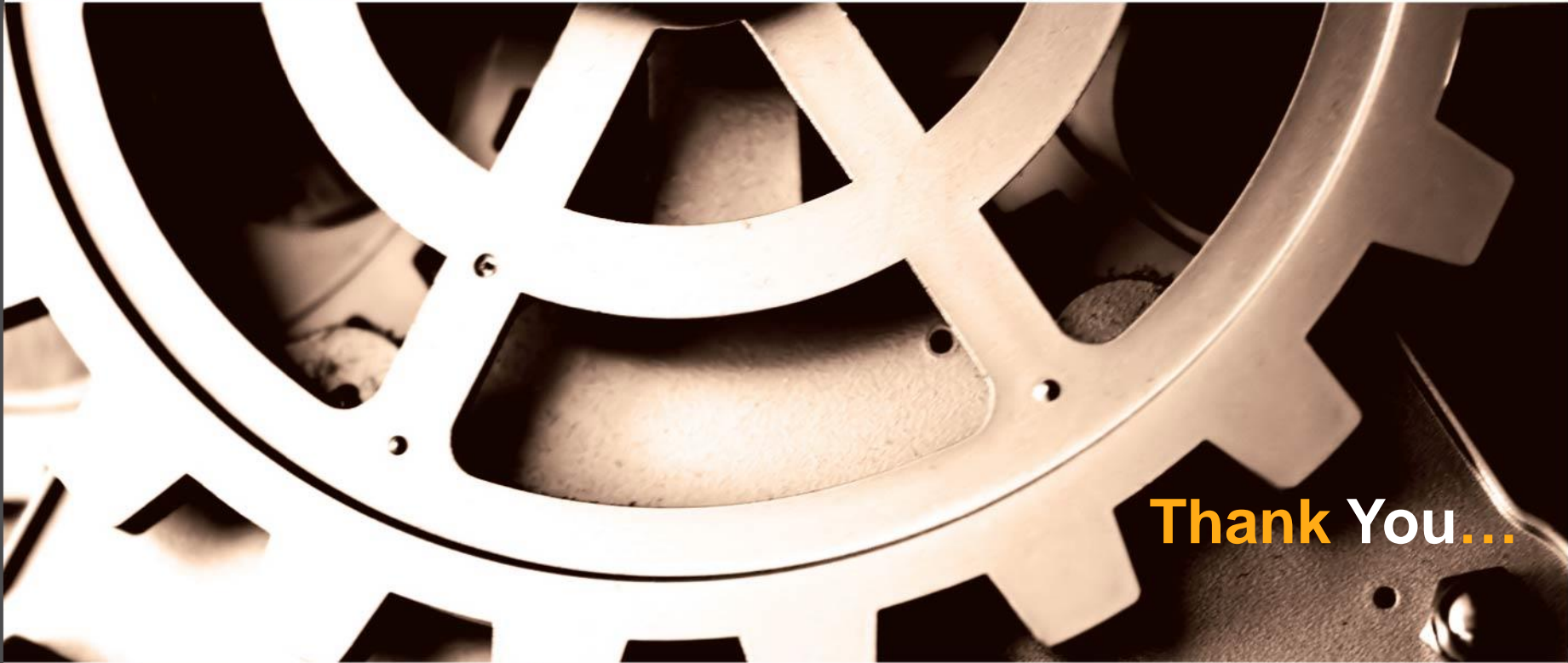
# UI Act Amendments (cont...)

- Illness period reduced to 7 days
- Must work 13 weeks prior to maternity leave
- Miscarriage can also be paid for 121 days
- Dependant benefits make provision for contributor to register beneficiary
- Agencies - Not allowed to pay for services
- Employers must declare monthly

# UI Contributions Act Amendments

EMPLOYEE CATEGORY	CONTRIBUTIONS		BENEFITS	
	Current Rules	New Rules	Current Rules	New Rules
Employed for less than 24 hours	Excluded	Excluded	Excluded	Excluded
Learners ito SDA section 18(2)	Excluded	Included	Excluded	Included
Public servants (still under discussion)	Excluded	Excluded	Excluded	Included
FN Employees to repatriate	Excluded	Included	Excluded	Included
President, Ministers etc.	Excluded	Excluded	Excluded	Excluded
Municipal Councillors, etc	Excluded	Excluded	Excluded	Excluded
Effective Date	Current law	Proposed to be effective 1 Mar 2018	Current law	Effective date to be gazetted





**Thank You...**